

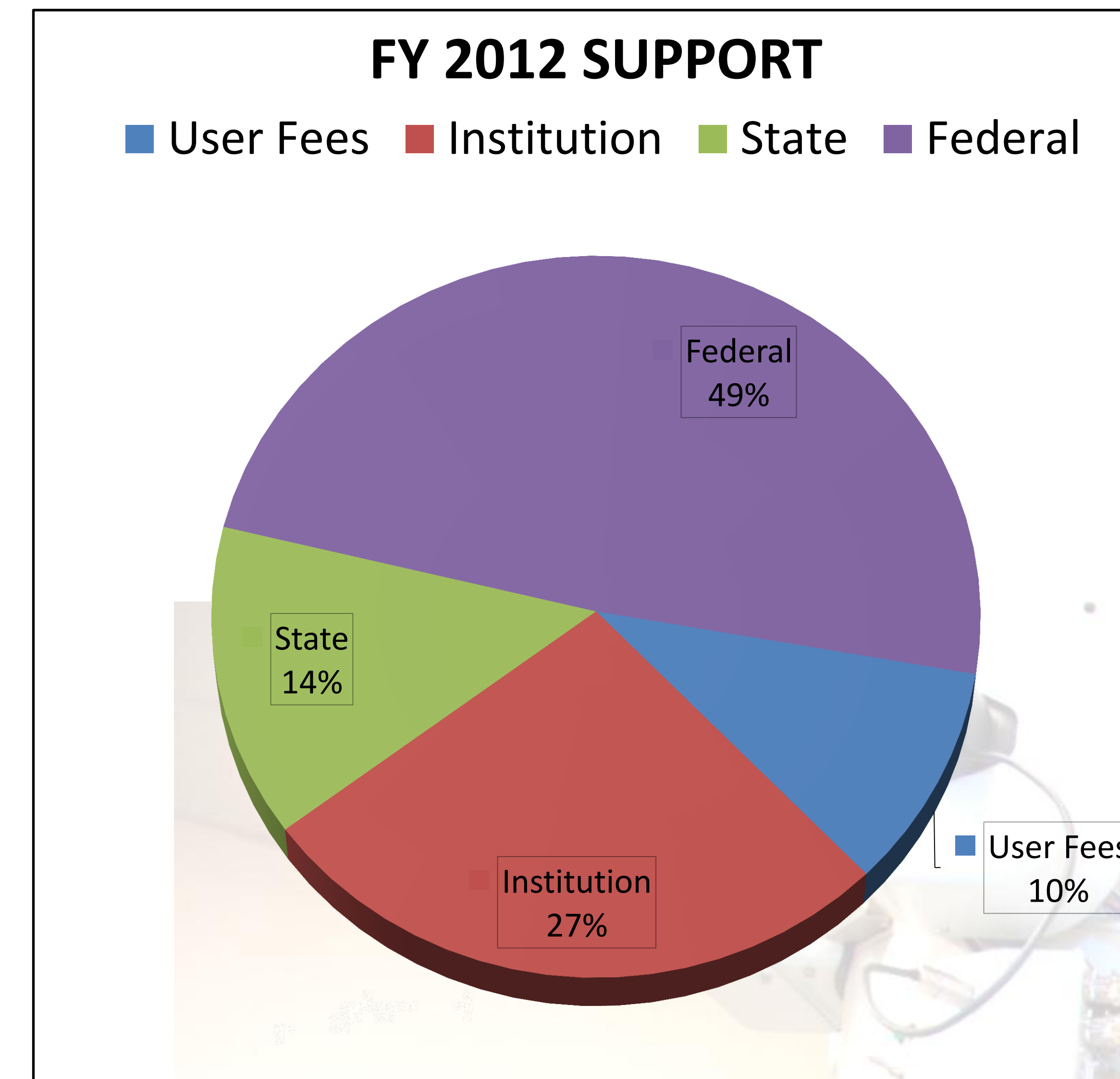


WVU Shared Research Facilities



West Virginia University, Morgantown, West Virginia
Lisa Sharpe, Assistant Director of Program Operations

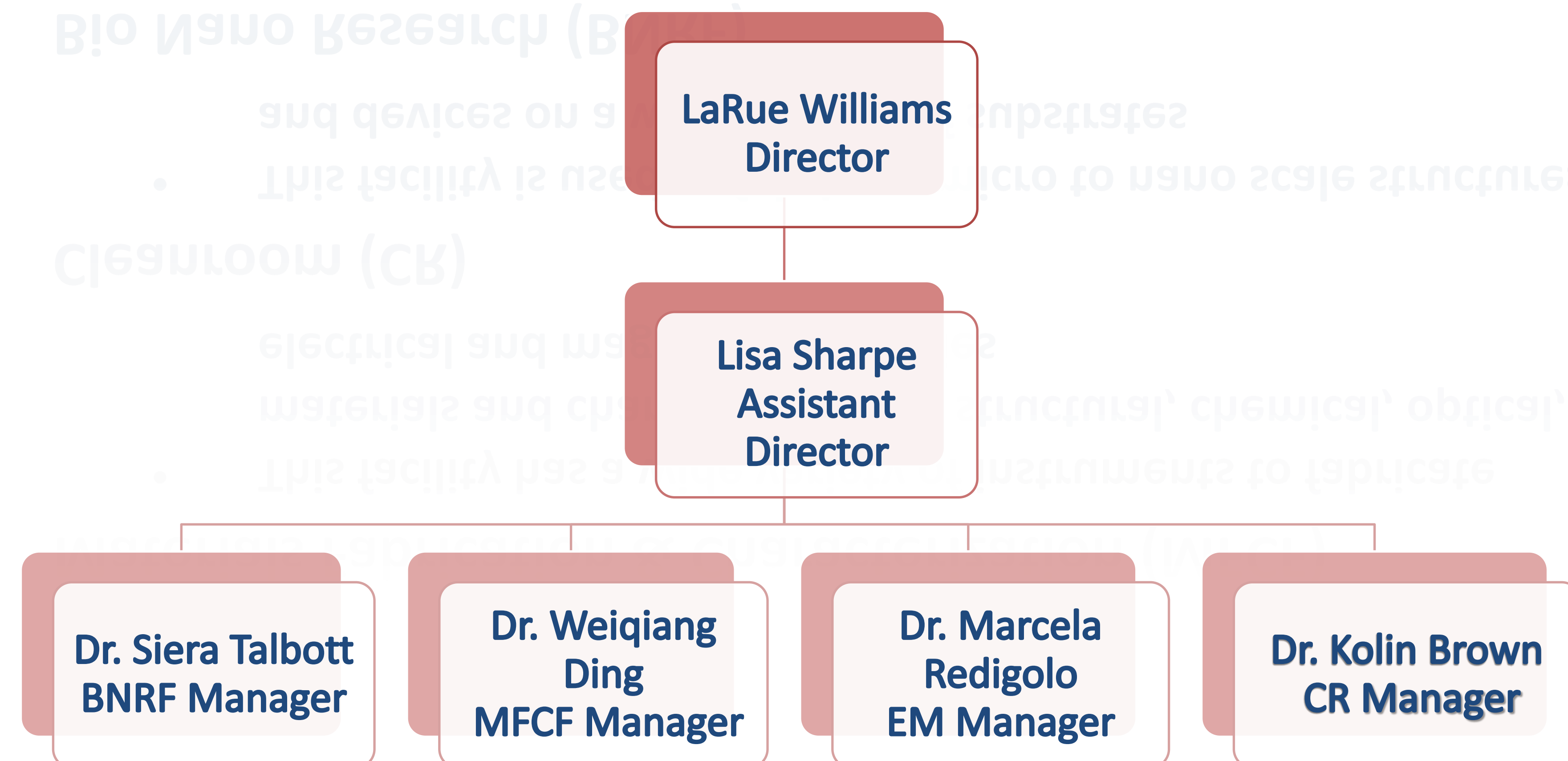
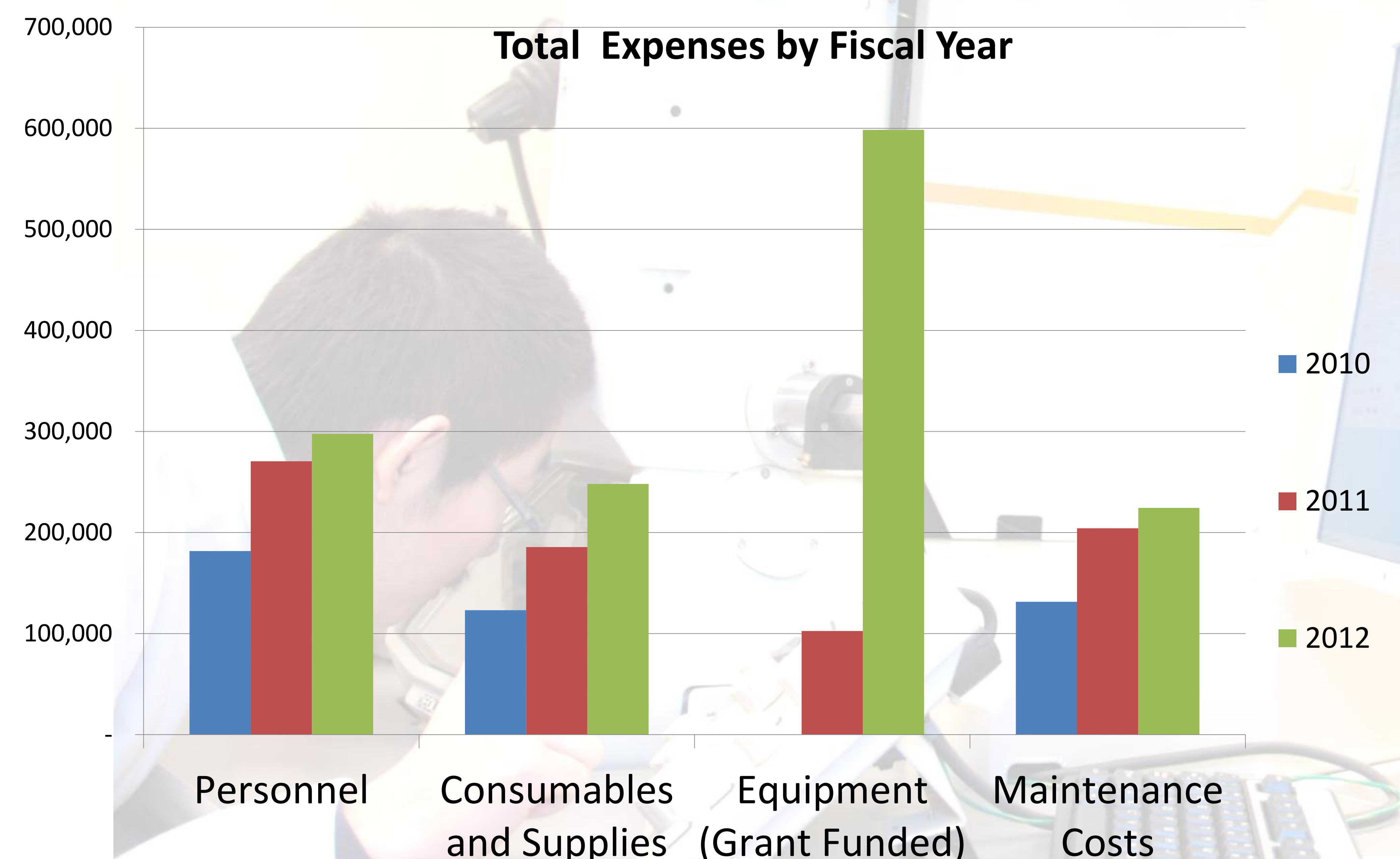
- **Electron Microscopy (EM)**
 - This facility maintains unique capabilities for electron beam characterization by combining the capabilities of two electron microscopes (SEM and TEM)
- **Materials Fabrication & Characterization (MFCF)**
 - This facility has a wide variety of instruments to fabricate materials and characterize their structural, chemical, optical, electrical and magnetic properties
- **Cleanroom (CR)**
 - This facility is used to fabricate micro to nano scale structures and devices on a wide variety of substrates
- **Bio Nano Research (BNRF)**
 - This facility is used to facilitate research at the intersection of molecular biology and nanomaterials.



Federal Funding supports only the BNRF (NSF EPSCoR RII Grant No. EPS 1003907)

Challenges:

- Funding to Cover Costs
- Repair and Replacement
- Expanding the User Pool
- Shared versus Core Concept



Users are graduate students, internal and external research faculty, and private industry

<http://sharedresearchfacilities.wvu.edu/>