

Emerging Issues

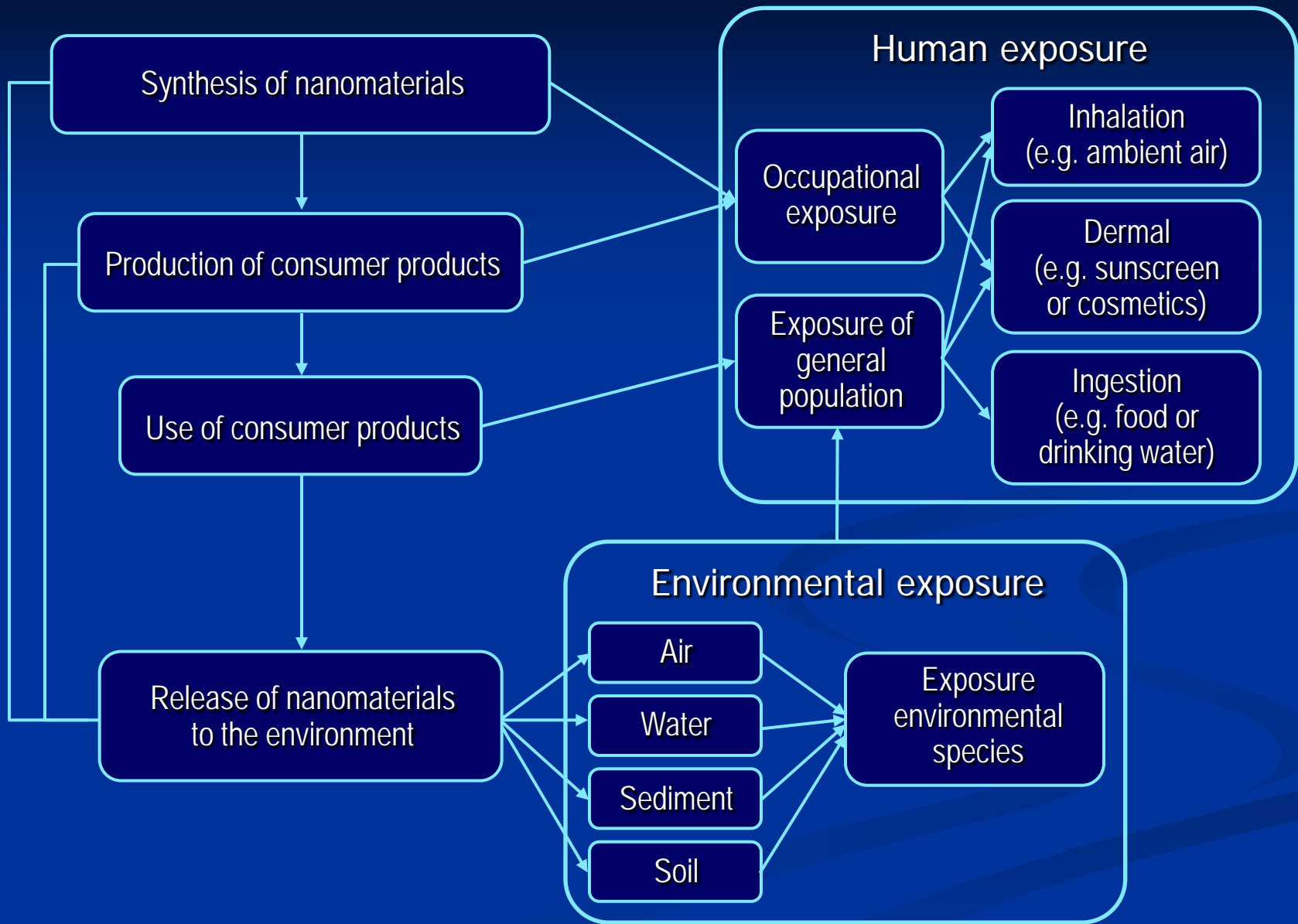
Paul A. Schulte, Ph.D.

Centers for Disease Control and Prevention
National Institute for Occupational Safety and Health



The findings and conclusions in this report are those of the author and do not necessarily represent the views of the National Institute for Occupational Safety and Health.

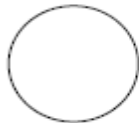




What could a "Nanoparticle" be?

Particle Categories

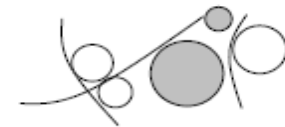
Classes of engineered nanoparticles



A. Spherical homogeneous



D. Agglomerate homogeneous



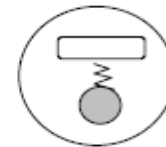
G. Heterogeneous agglomerate



B. Fibrous homogeneous



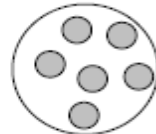
E. Heterogeneous concentric



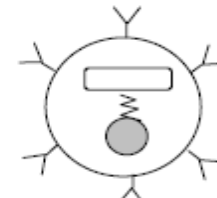
H. Active particle



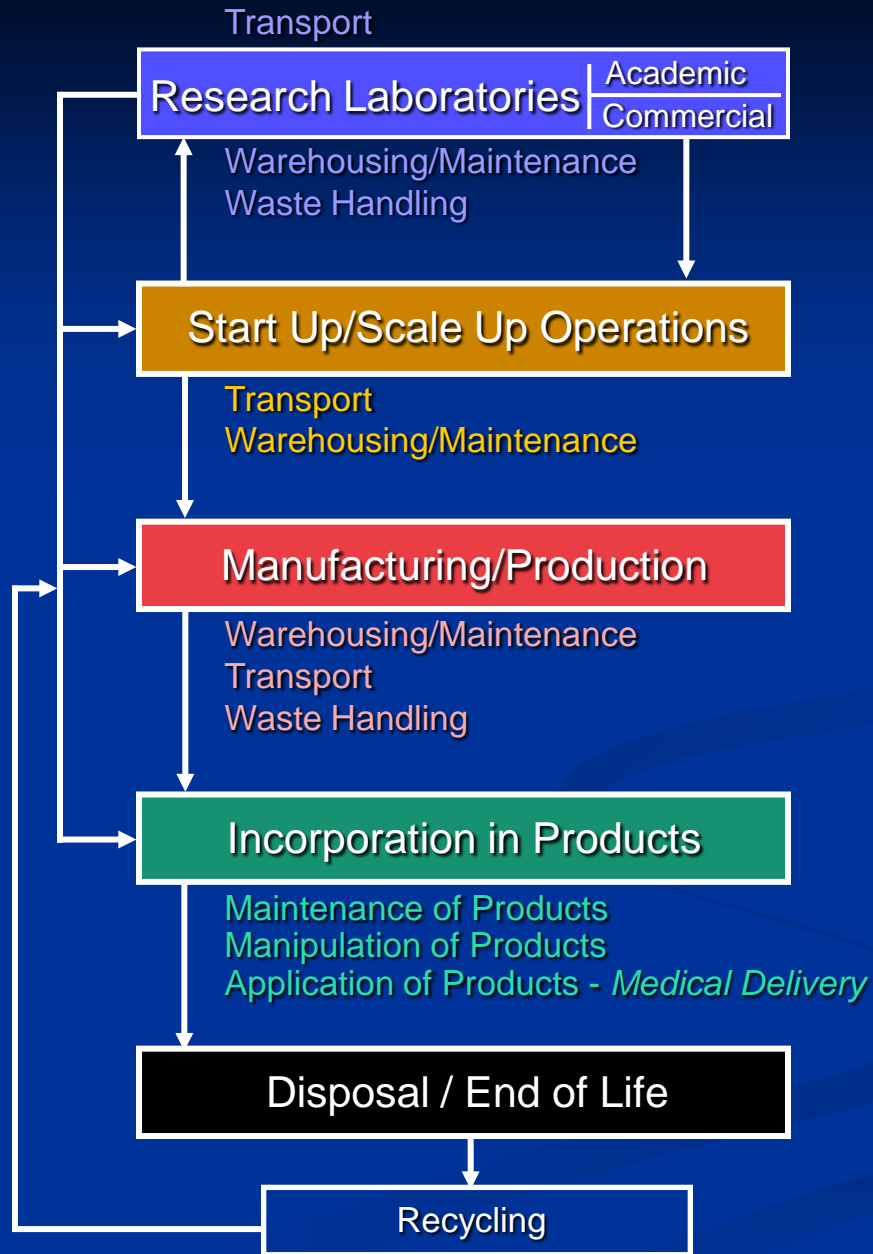
C. Non-spherical homogeneous



F. Heterogeneous distributed



I. Multifunctional particle



Parameters That Could Affect Nanoparticle Toxicity

- n Size
- n Shape
- n Composition
- n Solubility
- n Crystalline structure
- n Charge
- n Surface characteristic
- n Attached functional groups
- n Agglomeration
- n Impurities

Views Toward Engineered Nanoparticles

Time	Hazard classification	Type of action
Present	“As if”	Precautionary
Near future	“Likely to be”	Due diligence
Farther future	“Is”	Institutionalized